

**arts education now.
innovative minds
tomorrow.**



OFFICE OF ARTS & CULTURE
SEATTLE



**seattle
public
schools
creative
advantage
2016-17
progress
report**

dear colleagues & friends,

The partnership between Seattle Public Schools and the mayor's office for arts education began more than a decade ago. Since that time, our joint efforts have evolved into The Creative Advantage, a citywide initiative to establish equitable access to arts education for every student in Seattle Public Schools.

Our partnership has survived and flourished under four superintendents and four mayors. Over time, we have learned that together that we can eliminate opportunity gaps in the arts and ensure opportunities for young people to thrive in our city. This requires that we align and coordinate our efforts with community arts partners, teaching artists, teachers, students and families. Together, we are committed to knowing each student by story, strength and need. We are committed to listening and learning. We are committed to creating learning environments that honor and celebrate each student's personal and cultural identity and to making school a place where students have a sense of belonging. We are doing this through the arts.

As a district and as a city, we also recognize the importance arts plays in developing students' 21st century skills and resiliency. Our students are facing challenging times, and we are doing our best to equip them with the fortitude to handle the new landscape. Arts education allows us to center student's individual voices, foster leadership and provide opportunities to explore the world in meaningful ways by creating connections and a deeper understanding of the human spirit. The Creative Advantage has expanded the avenues in which our students, teachers, parents and arts organizations collaborate and access the arts.

When we embarked on this journey, we had a goal of eliminating arts education access gaps. Now, in 2017, we are well on our way to providing equitable access to an arts-rich education to all of our students. We are proud of our collective progress and humbled by the dedication of others to reach this goal. Together, we can realize our collective vision of excellence in education for every student in and through the arts.

Sincerely,



Dr. Larry Nyland, Seattle Public Schools Superintendent and Mayor Jenny A. Durkan

arts education in seattle public schools includes...

dance, media arts, music, theatre, visual arts, and arts integration taught by certificated teachers and through learning experiences facilitated by teaching artists and community arts organizations in and out of the school day.

21st century arts learning

All disciplines are taught as a means of expression, culture, identity, and ideas, and intentionally foster the 21st century skills of creativity, critical thinking, communication, collaboration, growth mindset, and perseverance.

Culturally responsive teaching

Culturally responsive teaching is an instructional practice that recognizes students as the center of learning. Culturally responsive teaching integrates the cultural knowledge, prior experiences, and varied learning styles of students as an entry point to make learning more relevant and effective. Culturally responsive educators understand the importance of building relationships and having social-emotional connections to students in order to create a safe space for learning.

arts education now. innovative minds tomorrow.



what is the creative advantage?

The Creative Advantage is a city-wide initiative to establish equitable access to arts education for each and every student in Seattle Public Schools. The Creative Advantage is made possible through a public-private partnership with Seattle Public Schools, the City of Seattle Office of Arts & Culture, the Seattle Foundation, and community arts partners.



Seattle Public Schools

Expands students' access to arts teachers and classes, transforms arts curriculum to incorporate 21st century skills, and helps schools develop arts-rich communities.

Seattle Office of Arts & Culture

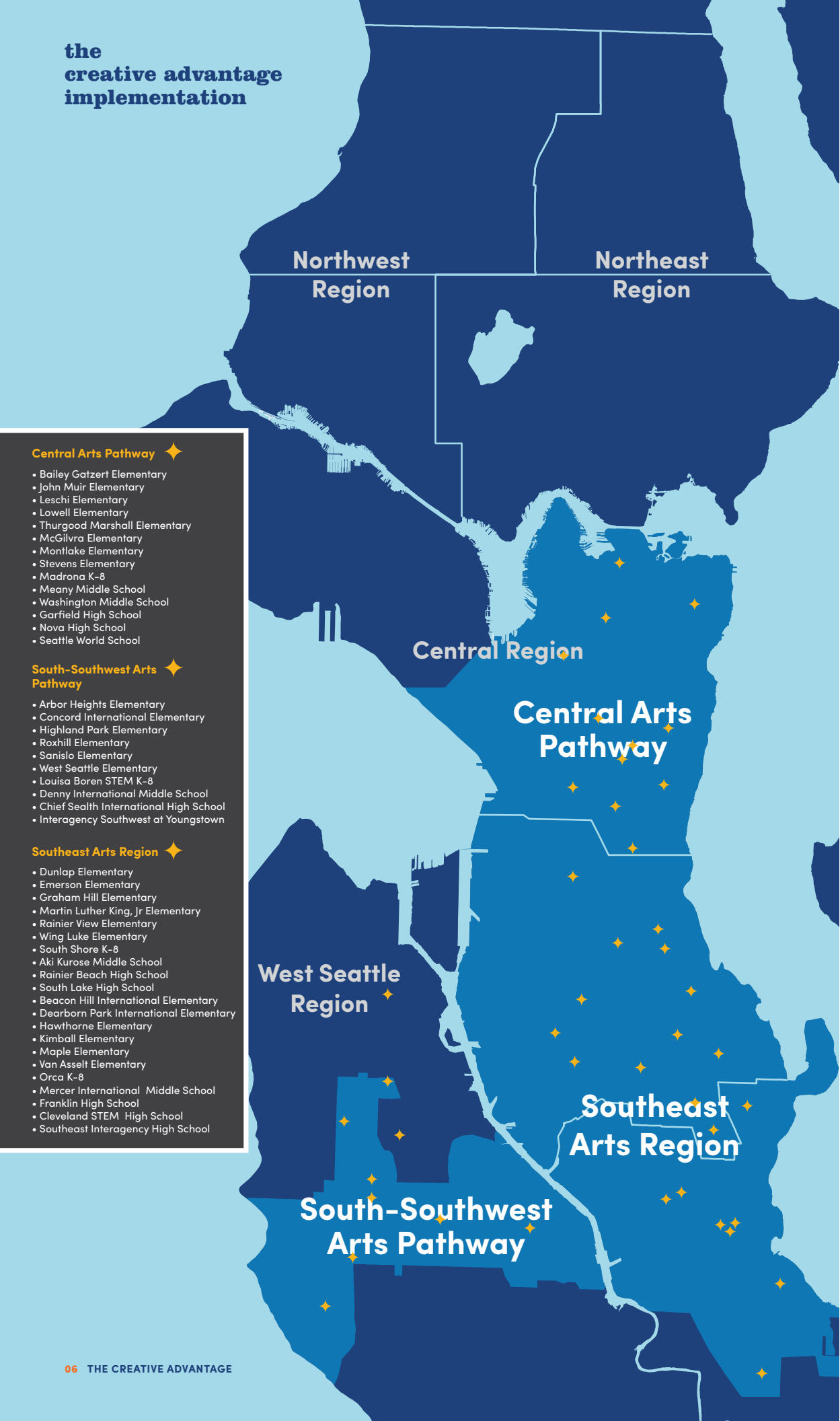
Increases students' access to professional artists and arts organizations and provides training for teaching artists and teachers.

Community Arts Partners

Engage students and teachers in learning that integrates arts into other subject areas and in cultural arts experiences.

Seattle Foundation

Acts as the fiscal sponsor of The Creative Advantage.



seattle public schools 2016-17 at-a-glance

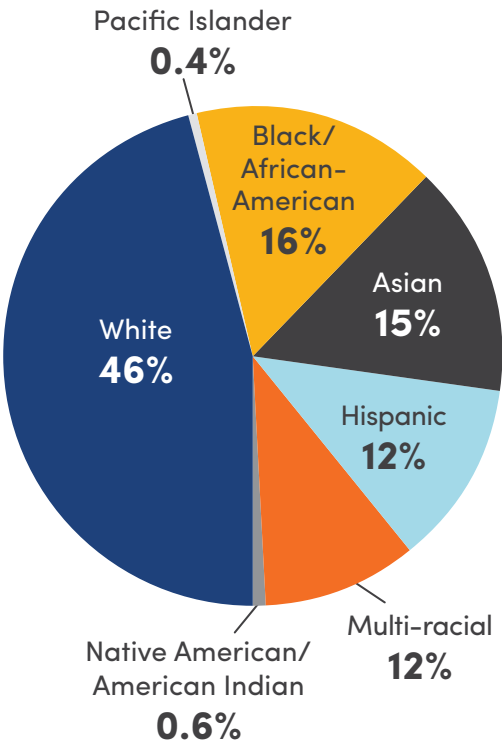
Mission
Seattle Public Schools is committed to ensuring equitable access, eliminating opportunity gaps, and excellence in education for every student.

Vision
Every Seattle Public Schools’ student receives a high-quality, 21st century education and graduates prepared for college, career and life.

Total enrollment: 54,976
Schools: 99
Languages/dialects: 143
Graduation rate: 76.9%
Educators: 4,810
Budget (FY 16-17): \$789.7 M

Schools with dance: 2
Schools with multi-arts: 11
Schools with music: 68
Schools with theatre: 15
Schools with visual arts: 62
Arts teachers at SPS: 208

Student demographics



“Providing arts allows young people to really explore who they are and who they can be as people. Helps them reflect on their life and helps them form their core values as people”
— Daniel Pak, Co-Founder, Totem Star Records



approach

how we do what we do...

Arts Instruction in Schools

Seattle Public Schools invests in hiring arts teachers, developing district guidelines to meet Washington State Basic Education laws, and providing resources like instruments, art supplies, and text books to ensure that every student has a well-rounded education and access to high quality arts instruction taught by certified arts teachers.

Regional and School Arts Planning within K-12 Pathways

The Creative Advantage is implementing in regional pathways to ensure sequential arts learning from kindergarten through high school. A regional pathway is defined by a neighborhood's elementary, middle and high schools. Each pathway's principal cohort creates a long-term regional arts vision that articulates their goals for arts instruction, integration, partnerships, and community arts events. Then, each school forms their own arts team made up of school staff, parents, youth, and community artists to develop school arts plans that honor their unique school community.

Community Arts Partnerships

The Office of Arts & Culture provides funding and support for schools to collaborate with teaching artists and arts organizations. Schools select from The Creative Advantage Community Arts Partner Roster—a vetted list of teaching artists and community arts and culture organizations who provide integrated and cultural arts learning for students and teachers, and exposure to different methods of expression and viewing the world.

Professional Development

The Creative Advantage partners with Seattle Art Museum to provide professional development for teachers and arts partners on themes such as culturally responsive teaching, trauma informed practice, social and emotional learning, arts integration, and 21st century skill development. Funding from The Creative Advantage also supports partner-led trainings for teachers, including integrating dance into physical education, media-arts integration and theatre integration.

Evaluation

The BERC Group, a local evaluator, annually tracks students' access to arts learning across the district; the quality of arts instruction; use of culturally responsive teaching practices; student demonstration of 21st century skills; and the impact of arts learning for students both while they are in school and after graduation.



"A lot of students can read, but they don't necessarily comprehend. Creativity opens the doorway in our brain and allows us to think more deeply and complex and absorb what we are learning. It makes us better learners in any environment." — Riley Delora, 10th grade

student success story

Nate, a student at Southwest Interagency, had his first music education experience his senior year in high school. “Two other kids wanted to play the drums, too, so I was like, sure, why not. I came in, started playing. It felt really good. And then, from there on it just grabbed me, and it didn’t let me go.”

Nate’s story illustrates how:

Arts increases student engagement “There are days where that was the only reason that I came to school, so I could come here and practice the drums.”

Arts helps students build hidden strengths “I never thought that this was something I was capable of doing. I’d never played any instruments or done anything like that before. It’s been really cool. It’s been eye-opening for me, for sure. Now I see that really anyone can do it if they really wanted to, if they just spent some time doing it. That’s all it takes, a little bit of practice.”

Arts can build a more positive school climate “This is one of the only places where everybody’s accepting...you know you’re safe and you’re not being judged by everybody. Kids are more open and willing to work with each other. This school has changed so much.”

2016-17 was the first year of implementation for The Creative Advantage at Southwest Interagency High School. The school is part of Interagency Academy, a network of small, alternative high schools spread out across Seattle designed to provide students with personalized support from staff who are trained in trauma-informed practice. Many of the students have had negative experiences with discipline or chronic absenteeism at large high schools and at Interagency, they get more personalized support from staff who are trained in trauma-informed practice.



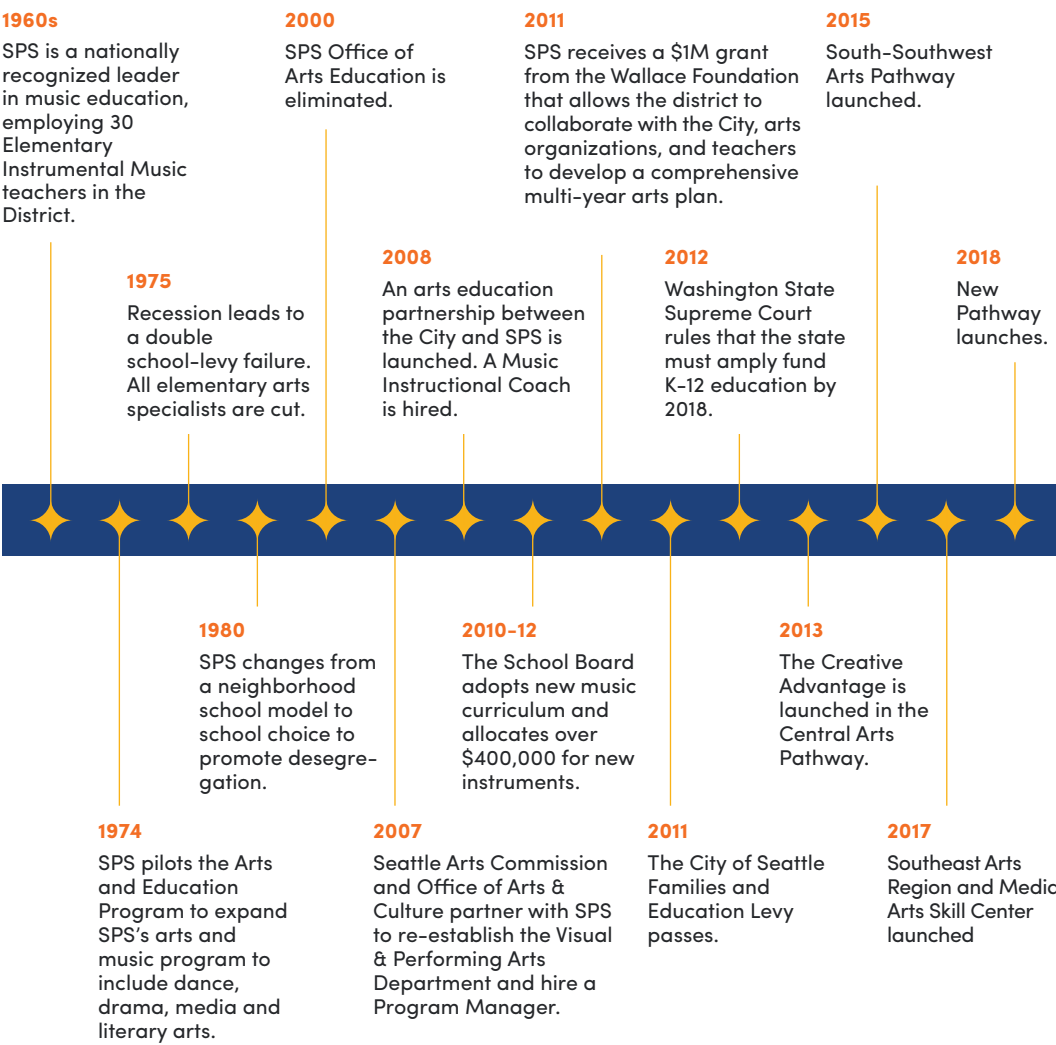
Nate and Totem Star Records co-founder and teaching artist Daniel Pak in the recording studio.

history

Equitable access to arts instruction is our mission in The Creative Advantage. Arts instruction is an essential component of educating the whole child and preparing students for college, career and life in the 21st century. The foundation for The Creative Advantage was set in 2011 with a generous grant from the Wallace Foundation to develop a plan for SPS to provide high quality arts education equitably across the district. The grant allowed the district to accelerate its efforts to address systemic barriers to students’ access to arts, and increased its capacity to expand its goals.

The Creative Advantage utilizes the resources of the district, city and arts organizations to provide a K-12 continuum of arts learning in schools. Comprehensive research conducted throughout the district showed that arts access gaps were the greatest for students of color, low-income and English Language Learners (ELL) students. The Creative Advantage is dedicated to eliminating these access gaps and in 2013 began with the Central Arts Pathway where arts access was the most inequitable.

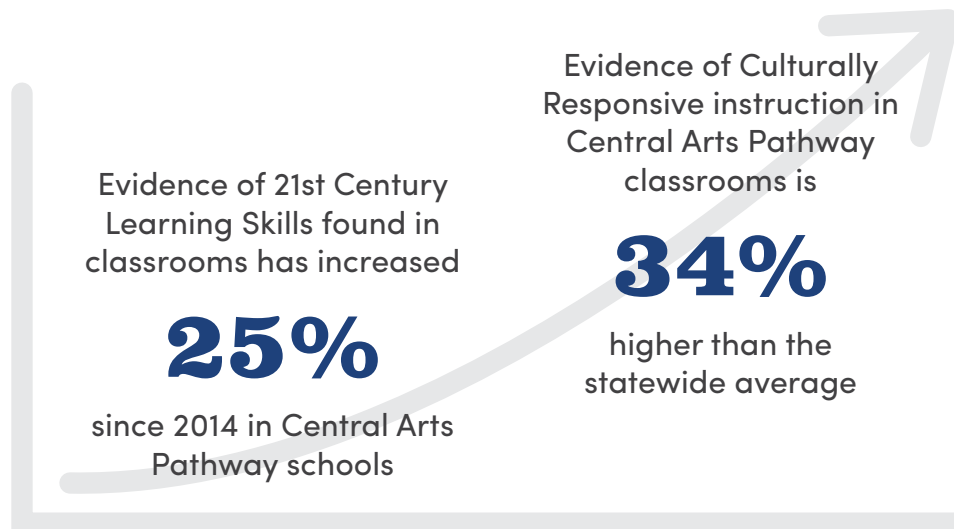
History of arts education at Seattle Public Schools



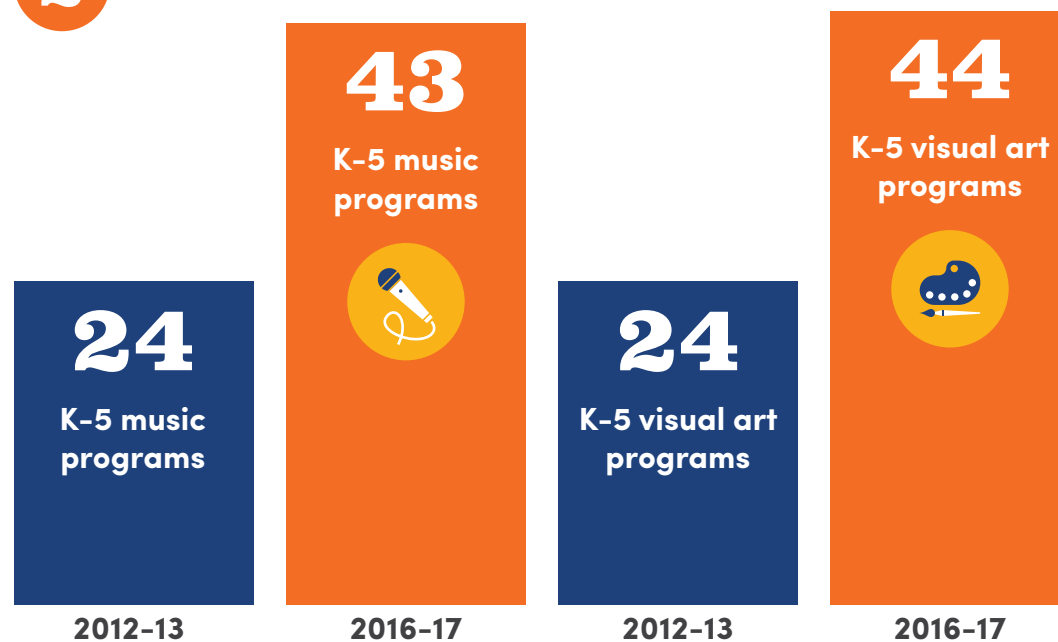
goals

every student in every school receives...

- 1 High quality arts instruction that teaches sequential arts skills and techniques, develops students' 21st century skills and is culturally responsive



- 2 Instruction from certified arts teachers



- 3 Integrated arts instruction



104

teachers learn to integrate film making, podcasting and graphic design



44

teachers learn to integrate theatre skills and techniques



4

Arts partnerships with community-based organizations and teaching artists

97

partners on the Creative Advantage roster

39

partnerships in

19

schools

- 5 Opportunities to connect arts to careers in high school

86

Media Arts students earned CTE credit through Summer Skills Center in 2016

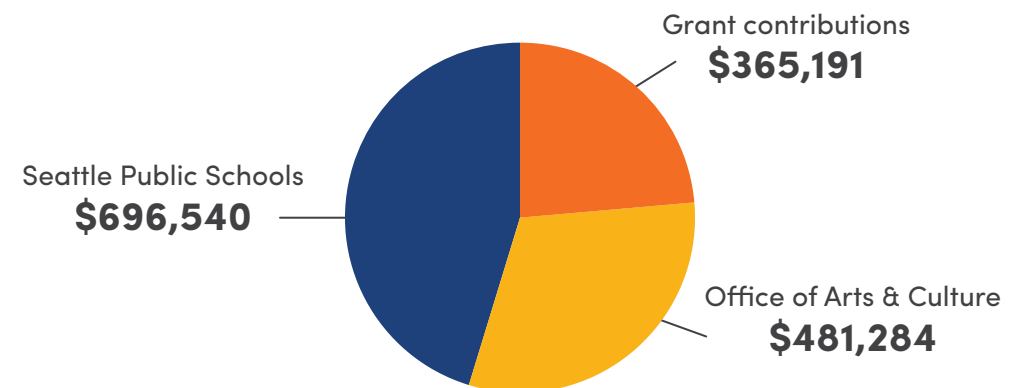


Media Arts at the Seattle Skills Center: creation of a preparatory course for high school students interested in creative industry careers



funding

Integrating arts back into SPS requires investments from the City, District, individual schools, families, students, community arts partners, and private donors. The investments below reflect staff and program investments from 2016-17.



The Creative Advantage leadership team

Kate Baker Creative Advantage Project Manager for Media Arts, Seattle Public Schools
Calandra Childers Deputy Director, Seattle Office of Arts & Culture
Lara Davis Arts Education Manager, Seattle Office of Arts & Culture
Randy Engstrom Director, Seattle Office of Arts & Culture
Dan Golosman Skills Center Principal, Seattle Public Schools
Dr. Brent Jones Chief Strategy & Partnerships Officer, Seattle Public Schools
Dr. Kyle D. Kinoshita Chief of Curriculum, Assessment & Instruction, Seattle Public Schools
Audrey Querns Creative Advantage Project Manager, Seattle Public Schools
Gail Sehlhorst Visual & Performing Arts Manager, Seattle Public Schools
Cashel Toner Executive Director of Curriculum, Assessment & Instruction, Seattle Public Schools

thank you



**Arts leadership coaches,
2016-17 and 2017-18**

Erika Ayer
Julie Breidenbach
Katherine May
Zachary Stowell
Farah Thaxton

Community Arts Partners

A Contemporary Theatre, Inc.
Aaron Walker-Loud
Adam Collet
Adefua Cultural Education
Workshop
Alicia Allen
Andy Peterson
Angela R. Goodman
Angie Bolton
Ann Marie Caldwell
Antonio Davidson-Gomez
Arni Adler
ArtMaranth Mobile School
Arts Corps
Arts Impact
ArtsEd Washington
Book-It Repertory Theatre
Carina A. del Rosario
Carla Moreno
Carol Rashawnna Williams
Coyote Central
Daemond Arrindell
Dana Squires
danceDaigre
Early Music Seattle
Eduardo Mendonca
Erin Lally
Eva M Abram
Extraordinary Futures
Franchessa Berry
Frye Art Museum
Gage Academy of Art
Gregory D Stump
International Capoeira
Angola Foundation
Jack Straw Cultural Center
Jah Breeze Rhythms
James R. Lapan
Janet Nechama Miller
Jay Aquinas Thompson
Jeanine Walker
Jehan Osanyin
Jennifer Bennett
Jourdan Keith
Junior League of Seattle, Inc.
Kathya Alexander
Kristina Sutherland Rowell
KUOW Puget Sound Public
Radio / RadioActive Youth
Media
Lauren Appel
Lauren Patrice Goldman
Marshall
Lin Lucas
Lynda Belt
Macha Theatre Works
Education
Melanie White
Museum of Pop Culture
Mysten Huggins

Naho Shioya
Nate Herth
Nicole Appell
Nikkita "KO" Oliver
Ocheami
Pacific Northwest Ballet
Patricia Auch
Powerful Schools / YMCA
Pratt Fine Arts Center
Rachel Atkins
Rachel Kessler
Red Eagle Soaring
Reel Grlls
Roger Fernandes
Sara Brickman
Sarah Liane Foster
Seattle Architecture
Foundation
Seattle Art Museum
Seattle Arts & Lectures
Seattle Children's Theatre
Seattle Opera
Seattle Public Theater
Seattle Repertory Theatre
Seattle Symphony Orchestra
Seattle Theatre Group
Sharon Birzer
Sierra Nelson
SIFF
Spectrum Dance Theater
Stephanie Guerra
Stone Soup Theatre
STYLE: Songwriting Through
Youth Literature Education/
Bushwick Northwest
Sumayya Diop
Thaddeus Jurczynski
The 5th Avenue Theatre
think.move.learn.
Totem Star
Urban ArtWorks
We.App
Whistfestop Dance Company
Young Shakespeare
Workshop
Youth in Focus

**Creative Advantage arts
team members, 2016-17**

Angeles
Delfino
Shelby
Callie Broughton
Aida Fraser-Hammer
Yoon Lee
Amy Allan*
Kathleen Allen
Julia Anders
L'Erin Asantewaa
Magda Ashtok
Carolyn Autenrieth*
Erika Ayer
Lori Badruswamy
Darcy Baker
Lisa Becerra
Erika Bell
David Bestock
Kayti Bouljon
Maria Breuder

Oksana Britsova
Clifford Bull
Tenny Canning-Mallory*
Joe Carchedi
Casey Cheever
Erin Chen
Jennifer Christensen
Jeff Clark
Rhonda Claytor
Christy Collins
Chris Cronas
Mary Cushman*
Brenda Ball Cuthbertson
Christy Dahms
Hannah Danforth
Anna Davidson
Daphne Dejanikus
Travis DesAutels
Monica Dewald
Claire Dijulio
Nicole Dingler
Daniel Downs
Laura Drake*
Lida Enche-Keene*
Elizabeth Enriquez
Kate Eriksen
Sandy Eshelman
Brian Fitch
Don Fleming
Susan Follmer
Kelsey French*
Chelsea Gabzdyl
Rebecca Garcia
Treneicia Gardner*
Megan Garica
Scott Gelband
Margaret Gingrich
Sunny Graves
Melissa Gray
Meghan Griffin
Heather Griffin
Stefan Gruber
Carole Guizzetti
Danielle Guzman
Beverly Harding-Buehler
Stewart Hawk
Stephany Hazelrigg
Kyle Hoffman
Na'Cesia Holmes
Jonathan Hughes
Bonnie Hungate*
Matt Hutz
Omana Imani
Greg Imel
Marcia Ingerlsev
Robyn Jordan*
Stephanie Jungblom
Lydia Jurcys
Tanya Kamila
Angela Klaassen
Karen Kosoglad*
Kim Krasne
Rebecca Laird
Lori Leberer*
Michelle Lehman*
Deana Linden*
Jennifer Lundgren*
Svetlana Mamedova
Casey Martin

Sarah Martin
Katherine May
Pamela McCowan-Conyers
Mary McDaniel
Liz McFarland
Gentle McGaughey
Christi McGrath
Danielle Meier
Aimee Mell
Marlene Mersch
Yeggy Michael
Thais Miller*
Kathleen Mills*
Sarah Mitchell
Lisa Moland
Marie Nelson*
Adrienne Nestor
Tia Nguyen
Kimberly Noble
Ruel Olanday
Noemi Oldham
Cristina Orbe
Daniel Pak
John Parker
Tarra Patrick
Mark Perry
Amanda Poch
Missy Pody
Mike Popelka
Tang Po-yuk*
Joan Rabinowitz
Chris Robert
Guadalupe Rodriguez
Anan Rudnick
Jill Rullkoetter
Melissa Rysemus
Julie Salathe
Mariela Salcedo-Valencia
Daniel Sato
Carrie Schwochow
Craig Seasholes
David Simmons
Nathan Simoneaux
Amber Simonton*
James Simpson
Tara Slinden
Katie Snyder
Andrea Soroko
Laura Strand*
Colleen Stump
Tracy Thirdgill
Tara Thomas*
Jeffrey Triestman
Julie Trout*
Longina Verdugo
Andy Wakefield*
Marta Wambaugh
Jodi Williamson
Sue Wilson
Alisha Winger
Megan Winterheimer
Janet Woodward
Tia Yarbrough
Alison Yount
Norma Zavala
Beth Zirngible
Elyse Zylstra

*Arts Team Coordinator



Seattle Public Schools

www.seattleschools.org

Gail Sehlhorst

Visual & Performing Arts Manager
ghsehlhorst@seattleschools.org

@SeattleArtsEd

[Facebook.com/TheCreativeAdvantage](https://www.facebook.com/TheCreativeAdvantage)

Seattle Office of Arts & Culture

www.CreativeAdvantageSeattle.org

Lara Davis

Arts Education Manager
lara.davis@seattle.gov